

THAMES BIRTHING UNIT

Tender signed

Construction of Thames Birthing Unit is back on track with Jennian Homes Coromandel chosen as the builder for the job. We hope to sign an official contract with them next month. Pre-construction works are underway in the meantime.

The announcement comes after the project was stalled in February because of over-priced tenders and a projected budget blowout.



Your personality Our expertise **Jennian HOMES**

It's good news for Thames-Coromandel women and for the DHB because the Jennian contract fits within the board's approved budget.

The unit is expected to open in February 2011 at 412 Mary Street. Thames Birthing Unit will be a huge improvement and a much more inviting place for women to give birth with brand new facilities, private rooms with ensuites and relaxing outdoor areas.

Currently the only birthing facility in the region is inside Thames Hospital, in old, adapted ward space that lacks privacy and ensuite facilities.

SECOND CARPARK BUILDING

Resource consent received

Waikato DHB has received resource consent approval from Hamilton City Council for construction of this new building opposite the new Emergency, current location of Memento.

Also known as 'the carpark in the triangle', the five-level building will hold 220 vehicles with potential for retail space on the ground floor. The building design will also allow further floors to be added in the future. Tenders are currently with five companies to design and build.

Waikato DHB Board approved the business case for construction of this building at its October meeting.

The tender is based on a 'design/build' concept with a total of four companies bidding for the work. Subject to affordability it is anticipated the building will open in late 2011 or early 2012.

As with most building projects, enabling works are required before construction can start. This includes re-locating Te Whare Taurima on to the main hospital site, beside the Breast Care Centre.

The project team is also looking to temporarily relocate Memento during construction.

EMERGENCY GENERATORS

Construction underway

Work on the emergency generator for Waikato Hospital is well underway behind the Building Programme Office.

Currently the hospital has insufficient emergency power capacity to support all core clinical requirements during the working day.

When the new generators are operational they will meet both current and future build requirements.

This is a joint project between the Building Programme Office and Property and Infrastructure.

The emergency generators will be commissioned in October, prior to the hand over from the builders of the new ED.



WAIKATO CLINICAL CENTRE

Excavation and piling underway, new plans for level four

Waikato Hospital's critical care unit comprising the intensive care and high dependency units will be relocated to level four of the Waikato Clinical Centre.

The original plan was for the unit to move into refurbished space in Waiora Waikato Centre.

Being in the Waikato Clinical Centre means more room for ICU and HDU, allowing for future growth and there is less design constraint. Other options were considered by an ICU/HDU (staff) user group, including above the new emergency department in the Acute Services Building but level four Waikato Clinical Centre was agreed as the best solution.

The new Critical Care Unit will open as part of stage two in January 2013 - seven months earlier than the Waiora plan. The first stage of the clinical centre is scheduled to open at the end of 2011.

The Building Programme Office is working with Health Waikato's Programme Management

Office to contact key stakeholders of departments who will move into the first completed stage next year.

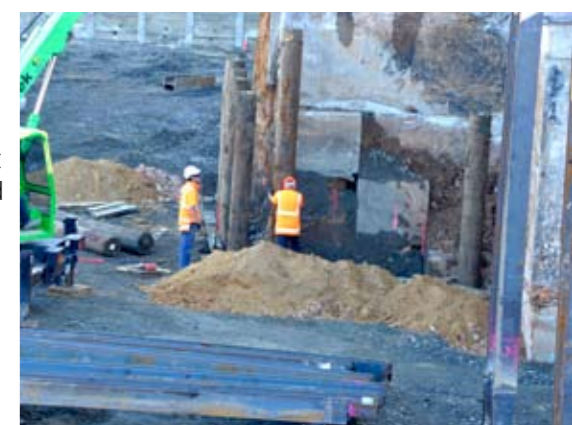
Hawkins Construction Ltd, the builder for the job, have moved their staff and temporary offices onto the campus at the old Findlay staff parking area by the road up to BEC.

Excavation and piling

Up to 1000 cubic metres of soil is currently being dug out, loaded up and taken off the Waikato Hospital site each day as part of the excavation for the Waikato Clinical Centre site.

This has resulted in an increased amount of trucks onsite. Staff are advised to use Selwyn St where possible over the next two weeks to avoid delays.

Piling is also now underway at the western end. Please be aware that this may cause vibrations, noise and disruption but the Building Programme Office, with Hawkins and Coffey Projects, are doing their best to mitigate this.



MORE INFORMATION:

www.waikatodhb.govt.nz/Building

Waikato DHB staff intranet: Home > About the DHB > Building Programme

Email: building.programme@waikatodhb.health.nz

NEW NAME FOR SCR TEAM

The SCR office is now known as the Building Programme Office

The Waikato DHB Board approved the name at its March meeting, a change that more accurately describes the work of this office according to Building Programme director Ian Wolstencroft.

With design phases of the original SCR projects now complete, the Building Programme Office's primary function is to concentrate on building functions.

Confused? No need to be. The office still manages the same work, oversees the same projects, and is still largely made up of the same faces. They'll also still work hard to keep you up to date with what they're doing and what's happening with the redevelopment project.

Health Waikato's Programme Management Office continues to manage service redevelopment and change management for the new buildings.

Re-vamped newsletter

This Building Programme Update replaces the SCRiP newsletter many of you have come to recognise. We thought it was time for a re-vamp after the name change. We hope you enjoy the fresh look.

The office

Located next to Property and Infrastructure at Waikato Hospital, the office is a busy place. The team's work is supported by a number of consultants and staff from other departments who dedicate time to the project.

A weekly meeting on Friday morning brings all these staff together, including Health Waikato chief operating officer Jan Adams, representatives from Media

and Communications, the Programme Management Office, IS and the group manager Waikato Hospital.

Then there are all the visits and onsite meetings with architects, construction companies, the list goes on.

The team



Left-right: (back row) Helena Berard, Mike Hemmings, Rita Hindle, Brendan Hague, (front row) Kate Foster, Ian Wolstencroft, Mark Goldsmith.

FORENSICS UPGRADE

Work is ongoing

Work on Ward 33, the final ward up for refurbishment, has started and expected to be complete in August.

Construction of the Whare and Kokiri is scheduled for completion in June.

This work in the forensic area of the Henry Rongomau Bennett Centre will increase bed numbers, raise the standards of facilities and allow the forensic service to provide better clinical and cultural services in a safe and appropriate environment.



REHABILITATION HUB

Awaiting ministry approval

The Rehabilitation Hub business case is still awaiting ministry sign-off.

The hub will have 113 beds for geriatric care, ortho-geriatrics, Organised Stroke Service and Mental Health for Older Persons. People aged under 65 and requiring rehabilitation will also be accommodated in the hub.

Significant outdoor areas and courtyard space are part of the plans. Construction also includes a bridge over Pembroke St to link the building with the main hospital.

Demolition of older buildings is scheduled to start very soon with construction of the hub currently due for completion in 2012, pending Ministry approval.

Before demolition can get underway, the following work needs to occur:

- Re-laying the fibre (data/voice) network that currently services buildings in the 'Triangle'
- Replacing an IT switch that also serves the area
- Disconnecting and where necessary re-routing core utilities e.g. water, fire control systems.

Some work such as replacing survey pegs is already underway. The Building Programme Office and contractors are taking steps to mitigate any disruption to services.



EMERGENCY AND ACUTE SERVICES

Construction ongoing

Construction of this new build is still on track for Emergency to open early next year. Acute Services (the two levels above) will open later in 2011.

Work on the Acute Hub, which links the new building to Waiora and Kempthorne, is now complete.

The Acute Hub will initially support an interim theatre solution, a process designed to support the hospital's theatre suite when the old Kempthorne Building is demolished next year as part of Waikato Clinical Centre construction.

