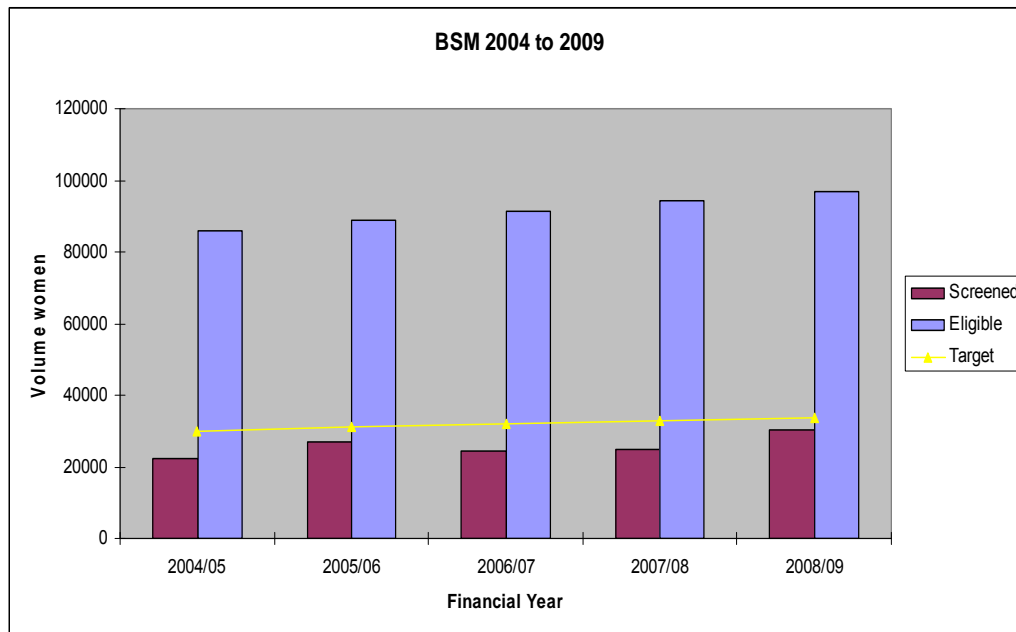


## BreastScreen Midland's annual progress Information for medical practitioners

The following graph demonstrates the progress BreastScreen Midland is making towards achieving their targets. One of the challenges is that the number of eligible women is growing by about 2500 a year overall, and it is a struggle to keep up with this growth let alone make progress in improving the coverage rate.

I.e. just to remain at say 60 per cent coverage we need to screen an extra 1500 women every two years.

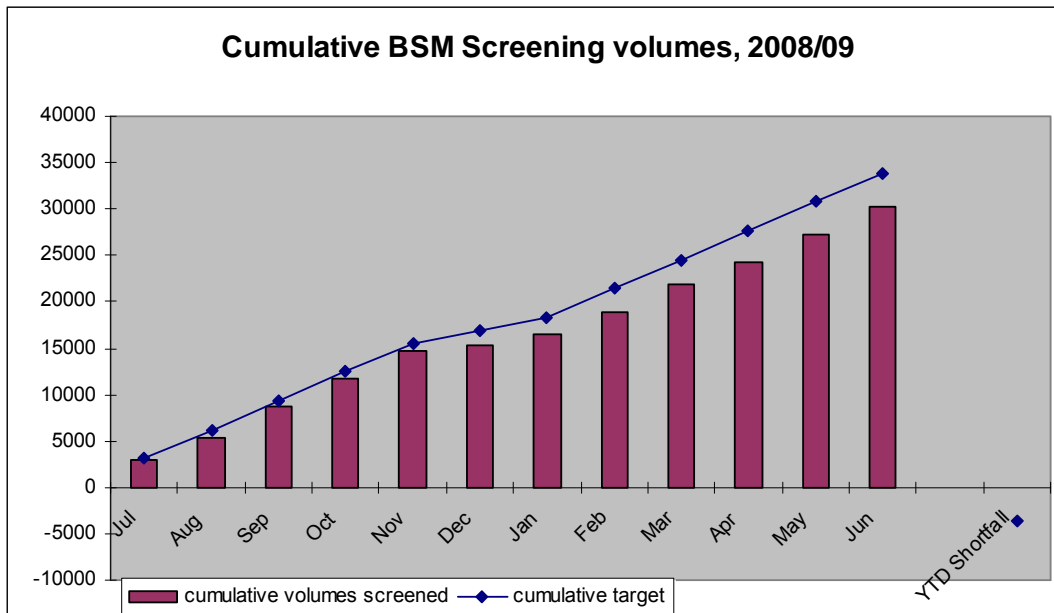


The next graph demonstrates that towards the beginning of the financial year, BreastScreen Midland produced the volumes to meet 70 per cent.

The infrastructure however was inadequate to support this volume in an ongoing way and a backlog occurred in reading and assessing the mammograms.

Since this time, we have focused on growing the service to do more volumes on a daily basis instead of having peak and trough months.

While we have not completely optimised this approach yet, significant progress has been made to achieve this goal through increasing the mammography read capacity, aiming to book 80-90 women a day in the Waikato, subcontracting out the mobile screens in Bay of Plenty and Lakes DHBs and introducing another sub-contractor in Hamilton.



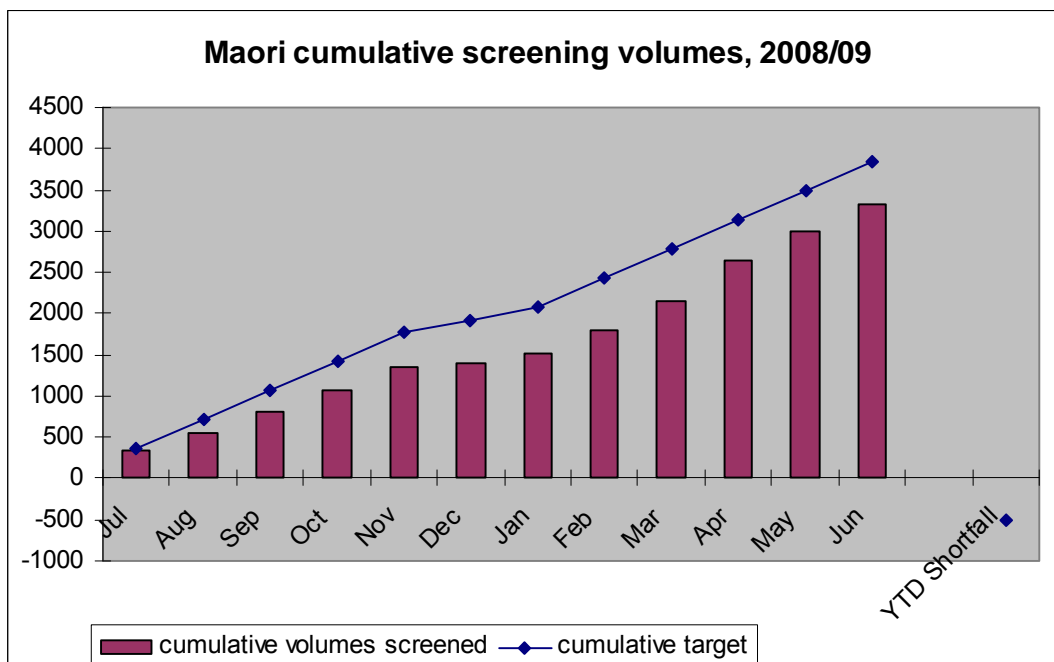
There is still a waitlist in Hamilton but it is reducing each month.

As of 1 October 2009, 811 women were waiting for their first mammogram and the longest wait is from January this year.

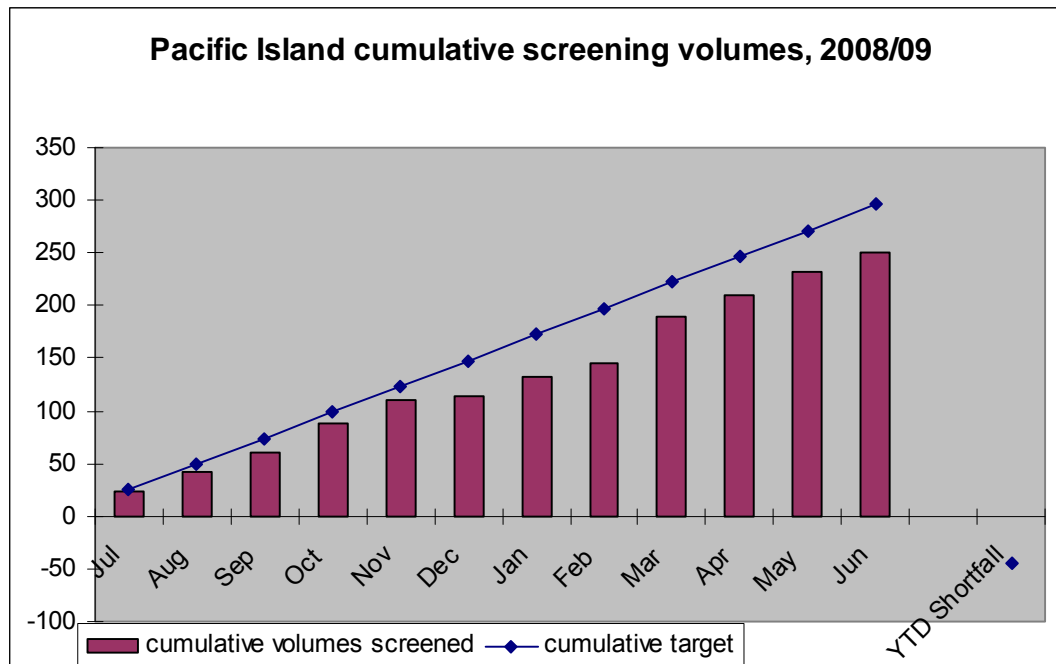
There is no waiting list in Bay of Plenty or Lakes DHBs other than for women who choose to wait until the breast screening mobile unit next visits their area.

The annual target of a 4.5 per cent increase for Māori coverage was not met. One approach to increasing Maori coverage is to deliver the mobile unit to areas where there are keen providers and there is poor Maori coverage such as Te Puke and Waharoa, which were first time visits for us this year.

BreastScreen Midland has also developed a more specific and tangible plan on how to increase coverage, which focuses on systems and processes across the continuum rather than just health promotion and recruitment activity.



The Pacific Island target based on a four per cent increase was also not met.



Despite these targets not being met, the following graph does show that BreastScreen Midland has been screening more Maori women.

Tokoroa volumes that are counted in an odd / even year e.g. 2007 / 08 affect Pacific coverage.

