

Showing you the way around your hospital

WITH THE dramatic makeover undergone at Thames Hospital in the past 18 months, it's a good thing there is new way-finding signage in place to help patients and visitors make their way around.

Thames Hospital manager Jacquie Mitchell said with so many changes taking place on campus as part of the Service and Campus Redevelopment project, Thames Hospital had the potential to become a confusing place to visit, without proper signage.

"Even though Thames is a relatively small campus compared to Waikato and Auckland hospitals, it can still be pretty confusing – especially when you haven't been here in a while because it has all changed," said Mrs Mitchell.

"Add to that the fact that Thames now has three entrances, simple signs are more important now than ever."

Thames Hospital's new signs are part of a complete signage review for Health Waikato services.

The new look external signage is already in place at Waikato and Thames hospitals, and is soon to follow in other centres with Health Waikato services such as Tokoroa, Taumarunui, Te Kuiti, Morrinsville and Te Awamutu.

The new signs are clear, simple and of international standard for way-finding.

Thames Hospital – which entrance do I use and where do I park?

Inpatient Unit: Enter off Bella Street, park behind the Bund Wall.

Thames Clinical Centre: Enter off Mary Street, parking outside for outpatients

Emergency Department: Enter off Mackay Street, parking available outside.



LEADING THE WAY: It is a lot easier to find your way around the new-look Thames Hospital campus now the way-finding signs are up.



GOOD DAY FOR IT: Thames Hospital and Family Health Team staff members made their way to Hamilton last month for the 64th Round the Bridges walk/run event. Thames Hospital manager Jacquie Mitchell led by example in the Healthy Eating Healthy Action (HEHA) crusade by Waikato District Health Board which had more than 600 staff take part in the event – all wearing HEHA sponsored t-shirts.



Waikato Hospital Neonatal Intensive Care Unit (NICU) is just weeks away from moving into their new building and the team is looking for some fresh faces to enjoy working in its fresh spaces.

The new NICU is shaping up to be a beautiful environment to work in, providing a lot more space and a whānau-friendly unit. Add to that a fantastic team and work flexibility, and that's the reason so many nurses travel far and wide to work at Waikato's NICU.

NICU nurses – would you like to work in a unit that offers:

- a highly supportive team environment
- considerable job satisfaction
- comprehensive orientation
- extensive learning opportunities
- flexibility with roster
- opportunities to care for sick and premature babies
- chances to work with families.

If this sounds like you, come along to our open afternoon, 12noon-2pm Thursday 18 December to get a sneak preview of Waikato Hospital's brand new Neonatal Intensive Care Unit and find out why it's such a popular place to work – it could be you!

Fresh faces for fresh spaces



Inpatient Unit to open next week

THE final piece of the new Thames Hospital puzzle is complete and ready to open.

The 54-bed Inpatient Unit, opening on Wednesday, will house the hospital wards and a high acuity unit for the more unwell patients.

Service manager Jacquie Mitchell said staff will move patients over into the new facility on Wednesday morning before visiting hours start.

“The new Inpatient Unit is a huge improvement on the old building.

“It will be quite a change for the patients, from one extreme to another and people coming to visit from Wednesday will also be in for a nice surprise when they arrive in the new area,” she said.

The brand new Inpatient Unit facilities include four-bed, double and single rooms, each with their own ensuite and courtyard view.

A rehabilitation courtyard is also a special feature of the unit along with two negative pressure rooms for patient isolation and separate whanau and procedure rooms.

The opening of the brand new area will also see the closure of the old wards that served the Thames-Coromandel community for the last 40 years.

Ms Mitchell said visitors to the new Inpatient Unit should park in the hospital’s Bella Street carpark behind the bund wall for easy access.

“The hospital signage has also been updated and we have volunteers on-hand to help if anyone is having trouble finding their way around the new areas,” she said.

Thames Hospital’s new Inpatient Unit is the final stage of Waikato District Health Board’s Service and Campus Redevelopment project at Thames Hospital.

The opening of the Inpatient Unit follows the opening of the new clinical centre in October, a new café and kitchen and construction of a bund wall last year.

Construction at Waikato Hospital will continue until scheduled completion in 2013.

Another open day, another success

ON MONDAY the Inpatient Unit was opened for the Thames-Coromandel community to see inside.

The open day drew a large crowd of locals, all keen to get a glimpse before the unit opens next week.

Service manager Jacquie Mitchell said more than 100 people from all over the Thames-Coromandel community came on the day.

“It was a great opportunity for us to show our appreciation to the community for their understanding while construction was happening.

“Everyone was very impressed with the new facilities and hospital staff are looking forward to showing it off to more people after it opens,” she said.



OPEN SOON: Each of the Inpatient Unit bedrooms has their own ensuite and views of a courtyard.

Birthing unit design underway

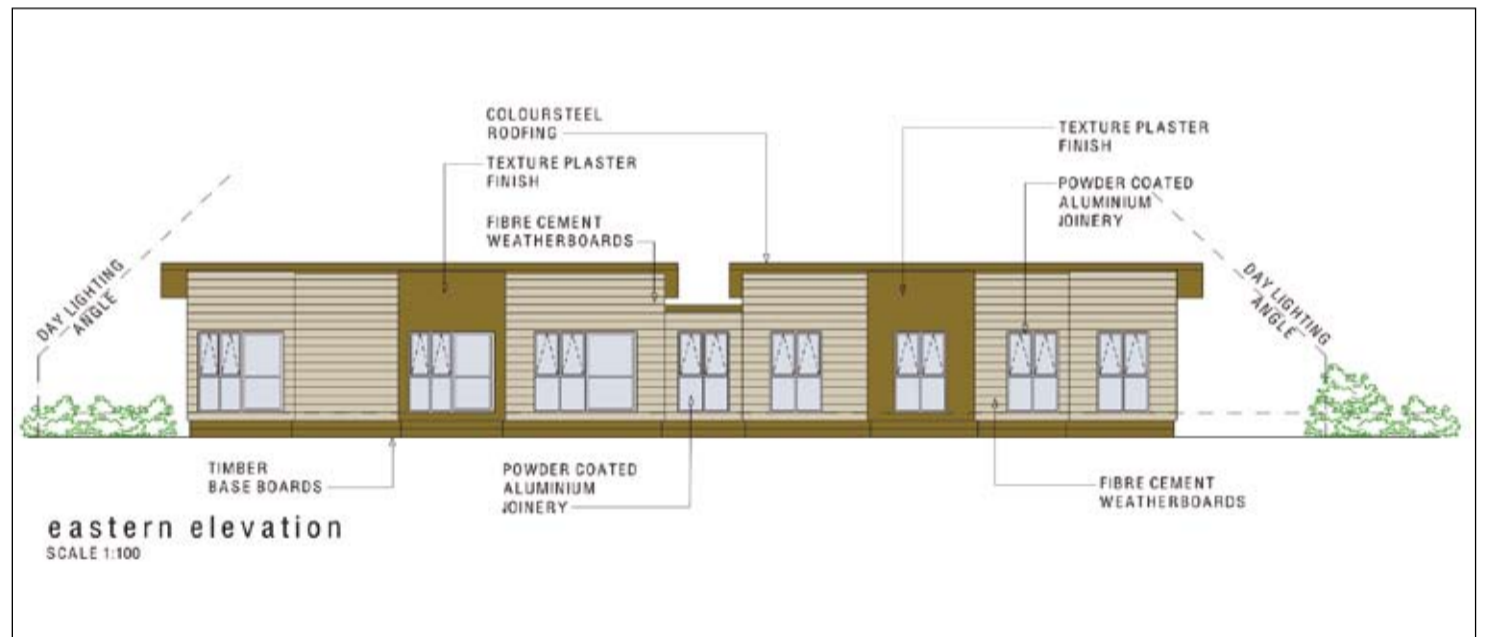
EARLIER this year, the Waikato DHB board approved the building of a stand alone primary maternity facility on Mary Street in Thames.

Since then, architects have started designing the building that will fit into the area opposite the Thames Clinical Centre, currently a carpark for Waikato DHB vehicles.

Construction on the new facility is scheduled to begin early in the New Year, after the DHB is granted resource consent from the council, but there won’t be much activity happening on the site for a while yet.

“Most of the building will be pre-fabricated off-site and then moved onto the site for final fit-out and construction,” Waikato DHB Service and Campus Redevelopment project director Ian Wolstencroft said.

“We expect the facility to be complete and open by mid 2009,” he said.



INITIAL DESIGN: An architect drawing of what the primary birthing facility may look like.



Out with the old, in with the new

Visitors to Thames Hospital over the past month would have noticed the work that is happening on the main corridor and to the MacKay Street entrance.

These two high-traffic areas of the hospital have undergone a much needed refurbishment and are looking better already.

New lino has been put down on the corridor floors and new paint on the walls and ceiling, matching it to the décor of the new Thames Clinical Centre and Inpatient Unit.

Improvements can also be seen at the entrance and a new canopy will be erected next month.

REFURBISHED: The Mackay Street entrance is due to get a new canopy next month.