

# SOUTH WAIKATO



# HEALTH PROFILE 2015

Population Health

Waikato District Health Board

## DID YOU KNOW?

### 6%

of the Waikato DHB population live in South Waikato TA

### 6TH

largest Territorial Authority (TA) in Waikato DHB

### 22,071

people live in South Waikato TA

## BIRTHS IN 2014

### 34

births to women 19 years and under

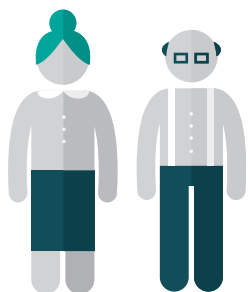
### 38

births to women 35 years and over

### 330

Total number of births in 2014

## POPULATION (2013 Census)



### 16%

of the population is 65 years and over



### 24%

of the population is under 15 years old



### 8%

of the population is under 5 years of age

## TRANSPORT

### 10%

of households have no access to a motor vehicle



Males live to around **77** years



Females live to around **81** years



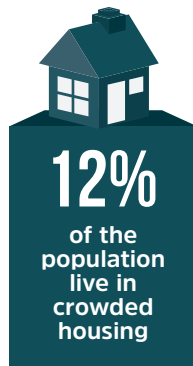
### 23%

of households are single parent



### 12%

of the population live in crowded housing



### 66%

(0-14 years) of the population live in the most deprived areas (9 and 10 NZ Dep)

## SMOKING

### 30%

2006

Regular smokers 15 years and over

### 25%

2013

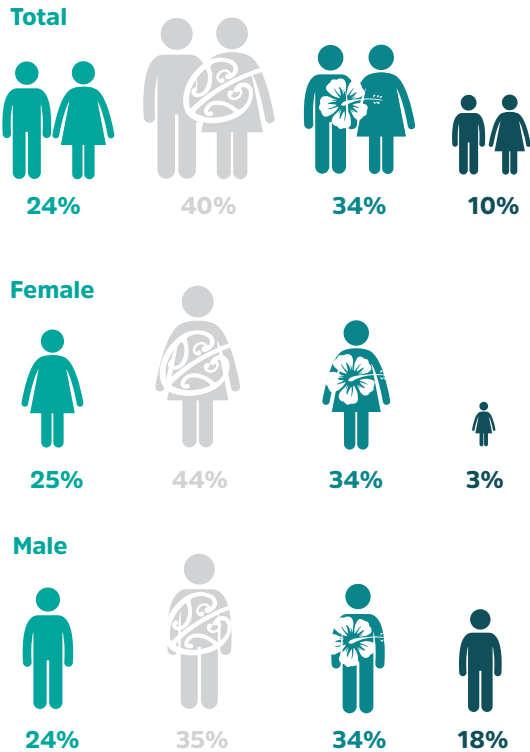
Regular smokers 15 years and over



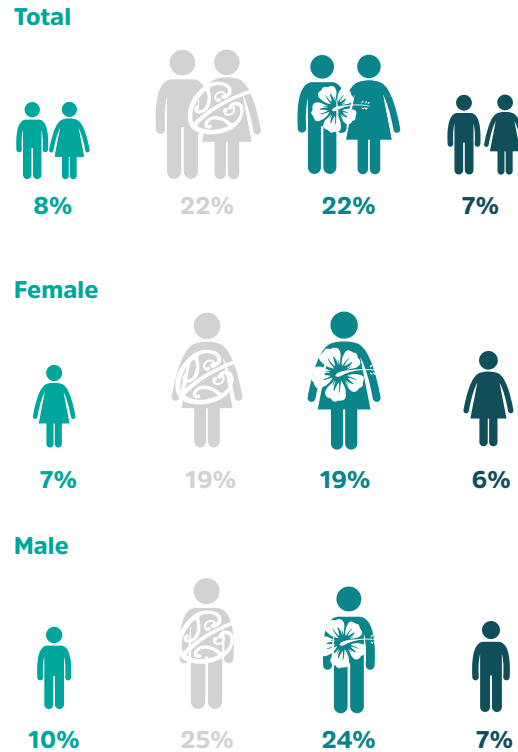
# SOUTH WAIKATO

# HEALTH PROFILE 2015

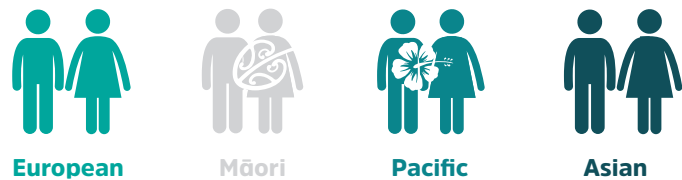
## Percentage of regular smokers within South Waikato by ethnicity. 2013 Census.



## Percentage of unemployed people within South Waikato by ethnicity. 2013 Census

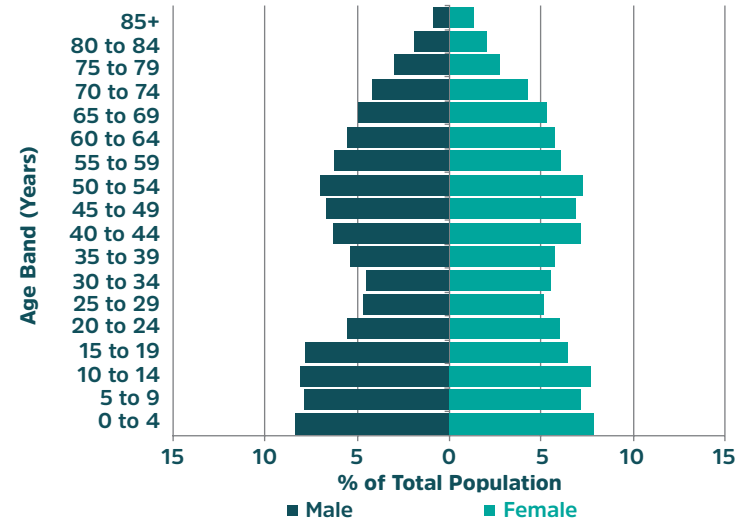


## POPULATION KEY

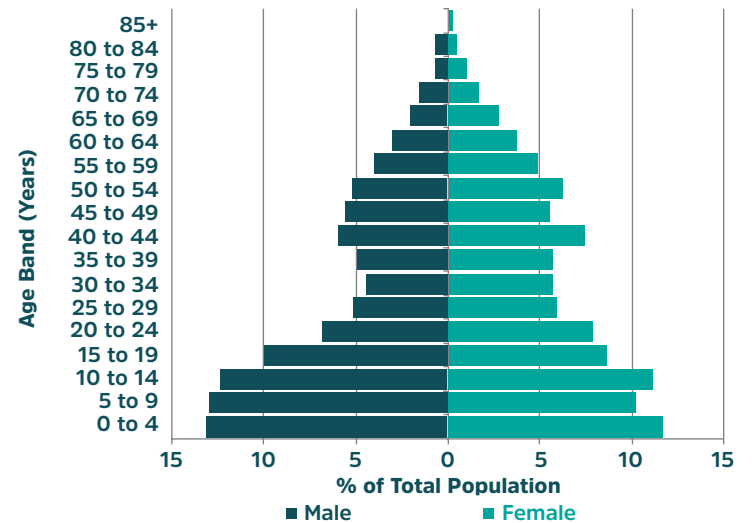


\*Definition: People aged 15 years and over are defined as employed if they worked for one hour or more for pay or profit, or without pay in a family farm, business or professional practice, or if they had a job but were not at work for some reason.

## Population Age Structure - South Waikato (2013 Census)



## Population Age Structure - Māori South Waikato (2013 Census)



### HOSPITALISATIONS AND DISEASE

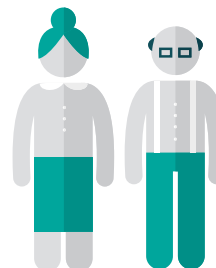
**1 IN 2**

visit the emergency department each year



Most common chronic disease admissions

**65+**  
= IHD & HEART FAILURE



**MĀORI**

aged 45-64 have

**3 TIMES HIGHER RATES**

of type 2 diabetes and COPD hospitalisations

**1 IN 4**

is admitted to hospital each year



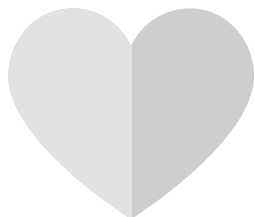
**3 OUT OF 1,000 WOMEN 45+**

are hospitalised for  
**BREAST CANCER**  
each year



The most common  
**CHRONIC DISEASE**

hospitalisations are ischaemic heart disease (IHD), chronic obstructive pulmonary disease (COPD), type 2 diabetes, heart failure and stroke.



**1 IN 100 ADULTS**

admitted for conditions

**RELATED TO ALCOHOL**



**MĀORI**

aged 45-64 years have

**3 TIMES HIGHER**

rates for

**HEART FAILURE**

than non-Māori



# SOUTH WAIKATO

## KEY FINDINGS

**MĀORI** have  
**3 TIMES HIGHER**  
rates for  
**SCHIZOPHRENIA**  
than Non-Māori



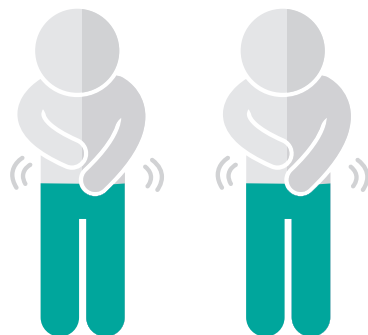
Admissions for  
**MOOD DISORDER**  
are seen in  
**1 OUT OF 1,000**  
**PEOPLE**



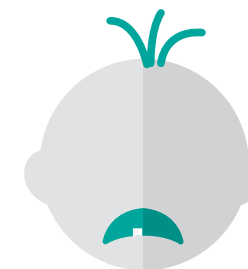
**1 IN 100**  
**CHILDREN**  
have been hospitalised for  
dental caries



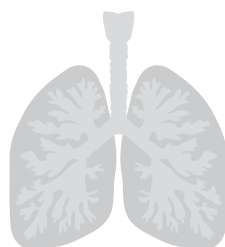
**2 OUT OF 1,000**  
**CHILDREN**  
are hospitalised for  
**GASTROENTERITIS**  
**EACH YEAR**



**DENTAL CARIES**  
hospitalisations are  
**20% MORE COMMON**  
**IN MĀORI CHILDREN**  
than Non-Maori children



**2 OUT OF 100 CHILDREN**  
is admitted to hospital  
**FOR RESPIRATORY**  
**INFECTIONS EACH YEAR**



**1 IN 2 PREGNANT WOMEN**  
**ARE OVERWEIGHT OR**  
**OBESE DURING PREGNANCY**  
(BMI over 25)



# SOUTH WAIKATO

## PROJECTIONS | KEY FINDINGS

Population  
Health

Waikato District Health Board

### IN 2026

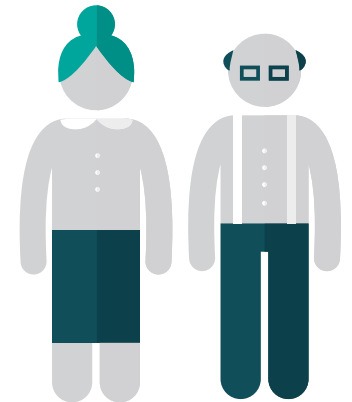
The population of  
**SOUTH  
WAIKATO**  
will  
**DECREASE  
BY 10%**



**UNDER 15s**  
will  
**DECREASE  
BY 12%**



**65+**  
will  
**INCREASE  
BY 18%**



The prevalence of  
**DEMENTIA IN 65+**  
is estimated to  
**INCREASE BY  
34%**



Admissions for  
**COPD AND HEART  
FAILURE IN 45+**  
is estimated to  
**INCREASE  
BY 10%**



**IHD & STROKE**  
admissions  
**IN 45+**  
are estimated to  
**INCREASE  
BY 7%**



Admissions for  
**MOOD DISORDER  
and  
SCHIZOPHRENIA**  
are estimated to  
**DECREASE BY  
10%**



## SOUTH WAIKATO KEY HEALTH INDICATOR STATISTICS

Key health indicator statistics for South Waikato TA (total and Māori population) compared with the overall Waikato DHB, 2014.

Health indicators	Waikato DHB	South Waikato		Māori		Māori vs non-Māori
	Rate	Rate	Time trend since 2006	Rate	Time trend since 2006	Rate ratio
In-patient events per 1,000 population <sup>1</sup>	260.0	260.1	↑ Increase	236.9	≈ No change	0.88
Emergency department visits per 1,000 population <sup>2</sup>	265.4	496.2*	-	535.3	-	1.12
Mortality rate per 1,000 population <sup>3</sup>	7.2	9.6*	-	8.5	-	-
Dementia, total with disease <sup>4</sup>	4,303	265	-	33	-	0.4
<i>Hospital stays per 100, 000 population<sup>5</sup></i>			-			
<b>IHD</b>						
45-64 years	566.0	827.6	≈ No change	1054.3	≈ No Change	1.39
65+ years	1856.4	2674.7*	≈ No change	3063.1	≈ No Change	1.15
<b>COPD</b>						
45-64 years	330.7	408.5	≈ No change	620.2	≈ No Change	1.79
65+ years	1473.7	2461.9*	≈ No change	5825.8	≈ No Change	2.73
<b>Diabetes type 2</b>						
45-64 years	356.3	479.5	≈ No change	1054.3	≈ No Change	3.42
65+ years	1019.2	1064.1	≈ No change	2162.2	≈ No Change	2.25
<b>Heart failure</b>						
45-64 years	150.4	255.7	≈ No change	573.6	≈ No Change	3.56
65+ years	1129.2	1553.1	≈ No change	2282.3	≈ No Change	1.52
<b>Stroke</b>						
45-64 years	190.0	266.4	≈ No change	387.6	≈ No Change	1.68
65+ years	969.6	1110.2	≈ No change	1021.0	≈ No Change	0.90
<b>Renal failure</b>						
45-64 years	50.9	35.5	≈ No change	77.5	≈ No Change	3.37
65+ years	205.3	241.6	≈ No change	360.4	≈ No Change	1.55

Health indicators	Waikato DHB	South Waikato		Māori		Māori vs non-Māori
	Rate	Rate	Time trend since 2006	Rate	Time trend since 2006	Rate ratio
Breast cancer, women 45+ years	292.5	272.6	≈ No change	445.9	≈ No change	1.93
Mood disorder <sup>6</sup>	157.5	112.4	≈ No change	106.3	≈ No change	1.22
Schizophrenia <sup>6</sup>	130.2	132.6	≈ No change	230.9	≈ No change	3.22
Disorders due to psychoactive substance use <sup>6</sup>	86.7	92.9	≈ No change	116.9	≈ No change	1.47
Intentional self-harm <sup>7</sup>	149.4	119.8	≈ No change	163.6	≈ No change	2.19
Alcohol related harm and conditions <sup>8</sup>	717.6	830.1	-	1267.8	-	-
Respiratory infections aged 0-14 years <sup>9</sup>	2033.9	1853.8	↑ Increase	1910.0	≈ No change	1.06
Asthma aged 0-14 years <sup>10</sup>	431.3	356.5	≈ No change	420.7	≈ No change	1.39
Gastroenteritis aged 0-14 years <sup>11</sup>	535.5	383.6	≈ No change	210.3	≈ No change	0.40
Dental caries aged 0-14 years <sup>12</sup>	1041.0	852.0	≈ No change	942.4	≈ No change	1.21
Rheumatic fever <sup>13</sup>	5.1	12.7	-	33.0	-	8.46
<i>Community care service use per 1,000 population<sup>14</sup></i>						
District nursing	286.4	474.9*	-	362.1	-	0.69
Public health nursing	19.2	24.6*	-	40.1	-	2.24
Physio-/occupational therapy/dietician	38.9	54.8*	-	40.8	-	0.67

Notes: 1-2 Waikato DHB hospital register Costpro, events per 1,000 population, 2014. 3 Events per 1,000 population, 2013. 4 Alzheimer's New Zealand. 5 Age- and ethnicity specific rates, annual average 2010-2014, Costpro. ICD10: ischemic heart disease (IHD) I20-25, chronic obstructive pulmonary disease (COPD) J40-44, J47, diabetes type 2 E11, heart failure I50, stroke I60-I69, renal failure N17-N19, breast cancer C50, 6 Age- and ethnicity-standardised rate per 100,000 population. Standardised to the NZ population. Mood disorder F30-F39, schizophrenia and delusional disorders F20-F29, disorders due to psychoactive substance use, F10-F19. 7 Age- and ethnicity-standardised rate per 100,000 population, ICD10 X60-X84. Standardised to the NZ population, 8 Alcohol attributable fraction weighted admissions, 9 Age- and ethnicity-specific rate per 100,000 population, ICD10 J00-J22, 10 Age- and ethnicity-specific rate per 100,000 population, ICD10 J45-46, 11 Age- and ethnicity-specific rate per 100,000 population, ICD10 A00-A09, 12 Age- and ethnicity-specific rate per 100,000 population, ICD10 K02, 13 Crude rate per 100,000 population, ICD10 I00-I02, 14 Events per 1,000 population, 2011-2014 (annual average), Costpro. Arrows show statistically significant differences over time (p<0.05) - Data not available for comparison. Rate ratios: non-Māori is held as reference category. A ratio above/below 1 means the outcome is more/less common among Māori than non-Māori.

## SOUTH WAIKATO KEY HEALTH INDICATOR STATISTICS

Key socioeconomic indicator statistics for South Waikato TA (total and Māori population) compared with the overall Waikato DHB, 2013.

Indicators	Waikato DHB	South Waikato		Māori		Māori vs non-Māori
	Rate	Rate	Time trend since 2006	Rate	Time trend since 2006	Rate ratio
<b>Risk behaviours<sup>1</sup></b>						
Regular smokers (15+)	17.2%	25.7%*	↓ Decrease	40.0%	↓ Decrease	2.02
Male	17.8%	24.3%	↓ Decrease	35.2%	↓ Decrease	1.71
Female	16.5%	26.2%	↓ Decrease	44.1%	↓ Decrease	2.32
Regular smokers (15 to 24)	18.1%	25.2%	↓ Decrease	33.3%	↓ Decrease	1.72
Male	19.0%	24.7%	≈ No change	32.4%	↓ Decrease	1.65
Female	17.2%	25.8%	↓ Decrease	34.5%	↓ Decrease	1.80
Smoking in pregnancy	18.7%	26.4%	-	38.0%	-	2.42
Births to mothers under age 19 per 1,000 births <sup>2</sup>	66.4	103.0	-	139.2	-	2.00
Births to mothers over age 35 per 1,000 births <sup>2</sup>	166.1	115.2*	-	88.6	-	0.64
Overweight in pregnancy (BMI 25-29) <sup>2-3</sup>	28.1%	27.0%	-	25.9%	-	0.93
Obese in pregnancy (BMI ≥30) <sup>2-3</sup>	25.5%	25.8%	-	29.7%	-	1.35
<b>Social and economic<sup>1</sup></b>						
Rates of te reo in the home (among Māori)	25.7%	-	-	22.5%*	↓ Decrease	-
Highest qualification: diploma (level 5) and over	25.2%	15.0%*	↑ Increase	9.4%	↑ Increase	0.55
No qualification (15+)	25.0%	34.6%*	↓ Decrease	42.1%	↓ Decrease	1.32
Unemployed (percentage of population in labour force)	7.7%	11.7%*	↑ Increase	21.8%	↑ Increase	2.77
Living in crowded housing	9.7%	11.8%*	-	-	-	-
Do not own usual residence	50.6%	50.8%	↑ Increase	68.3%	↑ Increase	1.54
Rented households	37.3%	39.5%*	↑ Increase	-	-	-
Households with no access to telecommunications	2.1%	2.8%*	↓ Decrease	-	-	-
Households with no access to a motor vehicle	7.1%	9.7%	≈ No change	-	-	-
Single parent households	19.0%	22.9%	≈ No change	-	-	-
Living in high deprivation areas <sup>3</sup>	26.3%	64.1%	↑ Increase	-	-	-

Notes: 1 2013 Census, 2 2014 National Maternity Collection, MoH, 3 Based on maternal height and weight at first registration with LMC or DHB Primary Maternity Service, 4NZDEP13 index scores of 9 or 10.  
 \*Significantly different from Waikato DHB value. Arrows show statistically significant differences over time (p<0.05) - Data not available for comparison. Rate ratios: non-Māori is held as reference category. A ratio above/below 1 means the outcome is more/less common among Māori than non-Māori.



## SOUTH WAIKATO PROJECTIONS 2026

Current and projected population and health statistics for South Waikato TA, 2016-2026.

Indicator	Estimated n 2016	Estimated n 2026	Change n	2016-2026 %
<b>Population estimates<sup>1</sup></b>				
Total population	21,635	19,485	-2,150	-9.9%
Under 15	5,005	4,420	-585	-11.7%
Over 65	3,695	4,375	680	18.4%
<b>Hospital admissions (n)</b>				
IHD, 45+	140	148	8	5.7%
COPD, 45+	109	120	11	10.4%
Diabetes type 2, 45+	64	66	2	2.4%
Heart failure, 45+	68	76	7	10.4%
Stroke, 45+	54	58	4	7.8%
Mood disorder	23	21	-2	-9.9%
Schizophrenia	26	24	-3	-9.9%
Gastroenteritis, 0-14	20	17	-2	-11.7%
Asthma, 0-14	18	16	-2	-11.7%
Breast cancer (women, 45+)	13	12	0	-3.3%
<b>Dementia<sup>2</sup>, prevalence 65+</b>				
	283	379	96	34.0%

Notes: Projections based on statistics NZ population projections by sex and age, 2016 (base)-2026, medium projection. Estimated admissions 2026 = current number of admissions (annual average 2010-2014) multiplied with the (age-specific) increase/decrease in population.<sup>1</sup> Population estimations for 2016. <sup>2</sup>Number with dementia in 65+ (prevalence 8.1%) based on a 2012 Alzheimer's NZ report. 2030, prevalence 8.7%.